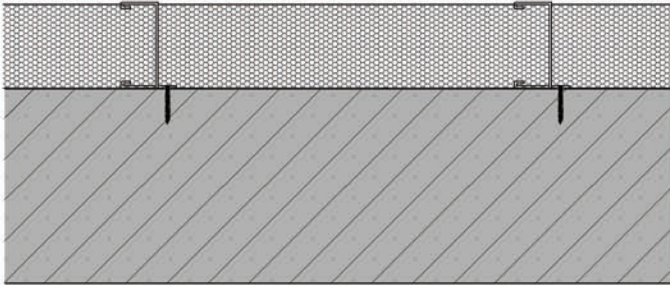


Insulating Options

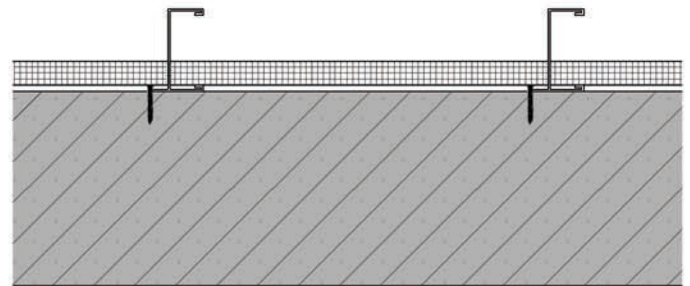
Listed below are your insulating options, shown with the approximate R - Value for each type.



Closed Cell Spray Applied Foam

Installed by a certified spray foam contractor

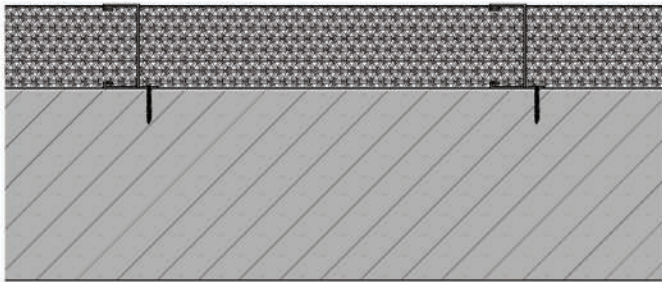
**R - Value 22.75 full cavity
6.5 per inch**



Polystyrene Foam Board

Install EcoStuds then install foam board in each cavity with a construction adhesive

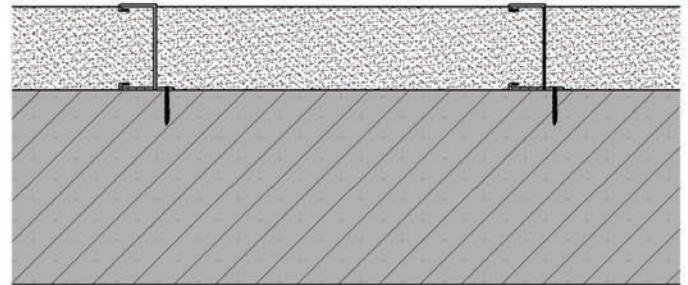
**R - Value 15 full cavity
5 per inch**



Blown in Cellulose

Install EcoStuds then fill cavities with blown in cellulose

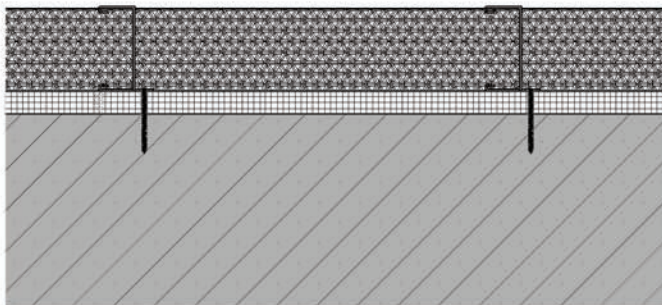
**R - Value 12.25 full cavity
3.5 per inch**



Fiberglass Bats

Install EcoStuds then fill cavities with full width fiberglass bats

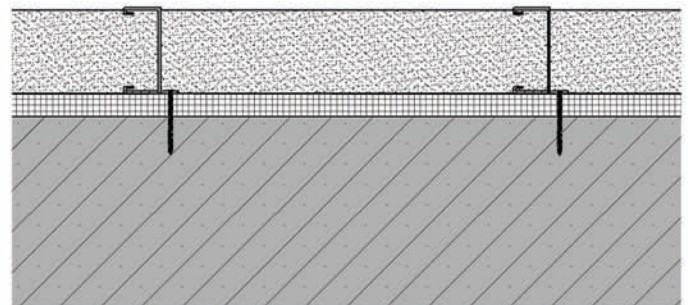
**R - Value 11 full cavity
3.14 per inch**



Polystyrene Foam + Blown in Cellulose

Install foam board against the wall with a construction adhesive, then mount EcoStuds and fill cavities with blown in cellulose

**R - Value 17.25 with 1" foam board plus
full cavity**



Polystyrene Foam + Fiberglass Bats

Install foam board against the wall with a construction adhesive, then mount EcoStuds and fill cavities with full length fiberglass bats

**R - Value 16 with 1" foam board plus
full cavity**