

Z Furring

Inside Corner

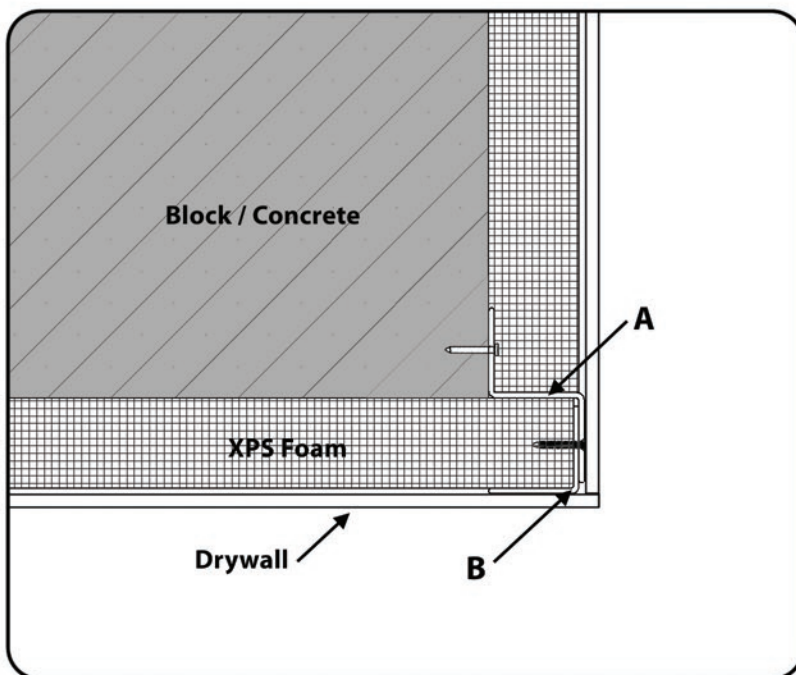
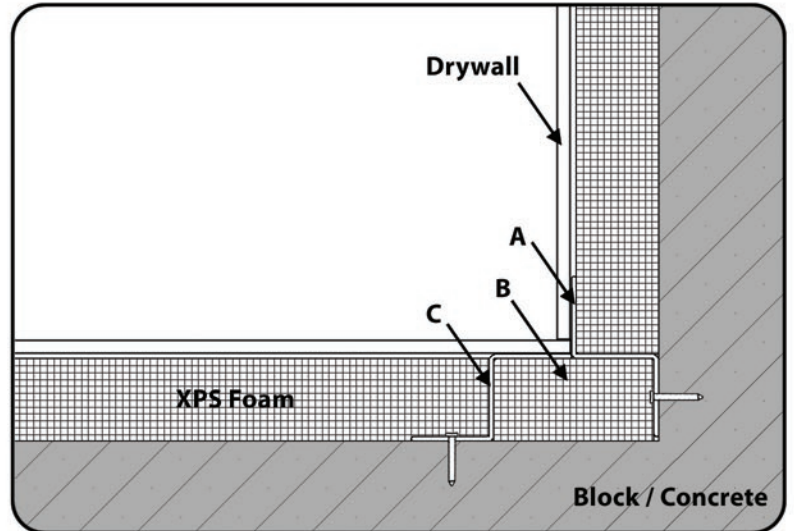
1.) Install EcoStud® (A) into corner as depicted

2.) Install XPS foam board (B) into corner

This chart identifies which foam board width to use with each EcoStud® Z furring size

<i>EcoStud Size</i>	1"	1.5"	2"	3"
<i>Foam Board Width</i>	2.5"	3"	3.5"	4.5"

3.) Install EcoStud® (C) as depicted



Outside Corner

1.) Install EcoStud® (A) on the outside corner as depicted

2.) Install XPS foam board on each side of the corner as depicted.

3.) Remove the nailing flange off of one EcoStud® to create the corner bead (B)

4.) Attach the corner bead (B) as depicted with coarse thread drywall or 1/2" needle pointed screws